

1 2 3 4 5 6 7 8

A

B

C

D

E

F

G

H

A

B

C

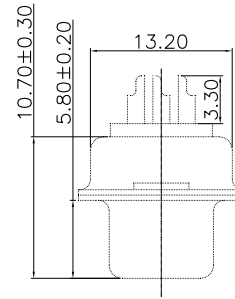
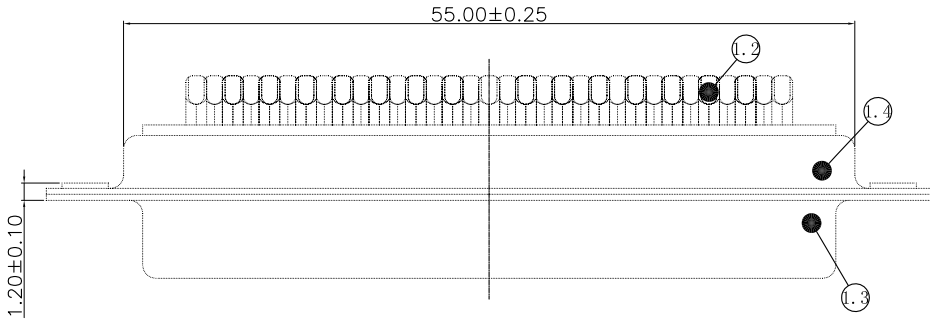
D

E

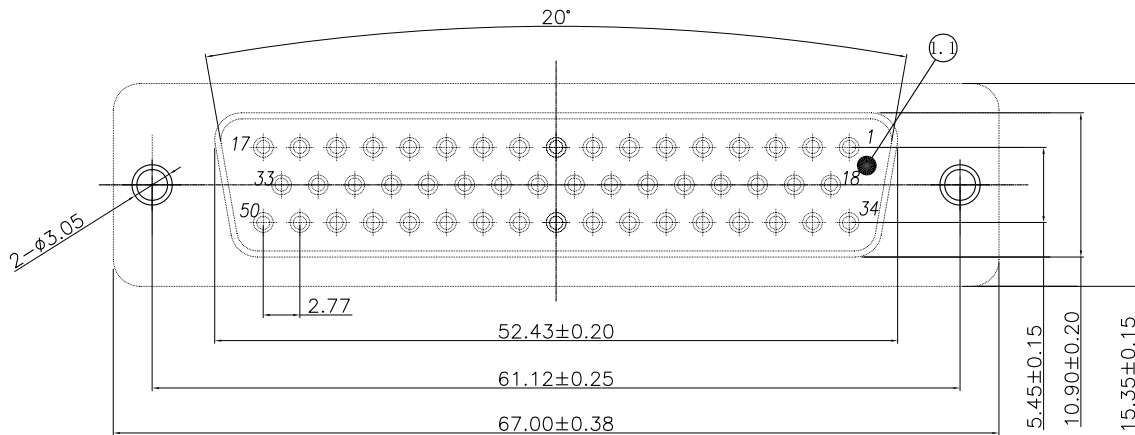
F

G

H



**RoHS
Compliant**



Note:

1.Material:

- 1.1 Insulator: PBT
- 1.2 Terminal: C2680
- 1.3 Front Shell: SPCC,Ni Plated
- 1.4 Back Shell: SPCC,Ni Plated

2.Specification:

- 2.1 Contact Resistance: 30mΩ Max.
- 2.2 Dielectric Withstanding Voltage: 500V(AC)
- 2.3 Insulation Resistance: 500 MΩ Min
- 2.4 Insert Force: 20 Kgf Max.
- 2.5 Withdraw Force: 2.0 Kgf Min.
- 2.6 Terminal Retention Force: 2.0 kgf Min.
- 2.7 Temperature Range: -50°C~+105°C
- 2.8 Durability: 600 Times at speed 200 times/hr

Order Information :

DSSLH-F 50 X XX X-59

Hi D-Sub Solder Female
Traditional Type Series

Pin

X:Without any screw
and accessories

G1:Gold Flash
G4: Au 15u"
G5: Au 30u"

C:Black
B:Blue
W:White

REV.	REVISION RECORD	DATE	LINEAR	ANGLES	ARIBA TECHNOLOGY CO., LTD.				
A	Original	07/05/16'	0.0 ±0.35 0.00±0.20	±3°	TITLE: Hi D-Sub 50P Solder Female Traditional Type				
			UNIT: mm		DWG.NO.: DSSLH-F50XXXX-59 REV. A				
			A4	NAME	DATE	SCALE	1 : 1	SHEET	1 OF 1
			APPROVED	COLIN					
			DESIGNER	KEN					
			DRAWN	AMY					

1 2 3 4 5 6 7 8